

GASARC™

AN ESAB® BRAND

CHEM MASTER SGM6000 SERIES

6.0 Purity Two Stage Stainless Steel Diaphragm Manual Change Gas Control Panel

The Chem Master SGM6000 series two stage manual change control panels are designed for primary pressure gas control of corrosive, toxic or high purity gases up to grade 6.0 purity (99.9999%), on gas distribution systems where constant delivery pressure is required.

- **SGM6021 Series** | Two Stage Single Cylinder Diaphragm Manual Gas Change Control Panel, FKM Seal, FFKM Pressure Relief Valve
- **SGM6022 Series** | Two Stage Single Cylinder Diaphragm Manual Gas Change Control Panel, EPDM Seal, FFKM Pressure Relief Valve
- **SGM6041 Series** | Two Stage Twin Cylinder Diaphragm Manual Gas Change Control Panel, FKM Seal, FFKM Pressure Relief Valve
- **SGM6042 Series** | Two Stage Twin Cylinder Diaphragm Manual Gas Change Control Panel, EPDM Seal, FFKM Pressure Relief Valve



★ FEATURES

- High pressure isolation valves
- High pressure purge facility
- Two stage pressure regulation
- Process line isolation valve
- Encapsulated seat design
- Single and twin cylinder configuration

📄 MATERIALS

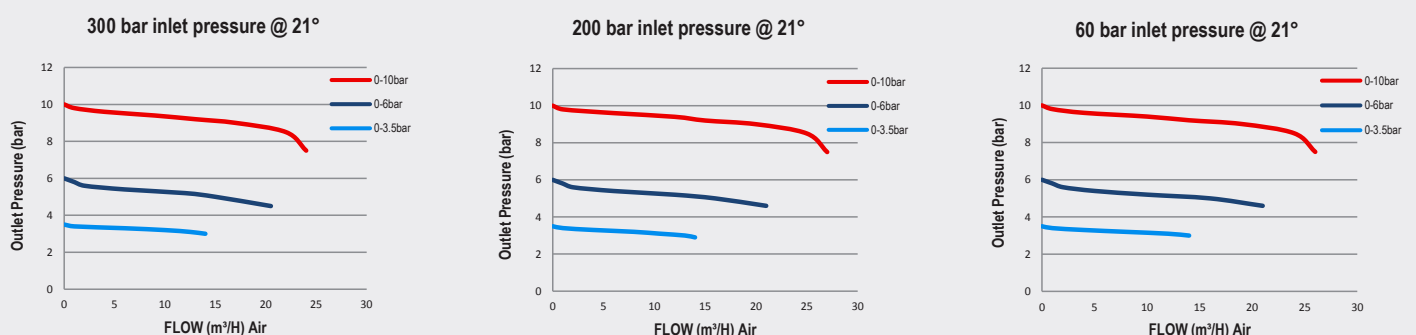
| | |
|-----------|--------------------------------|
| Body | 316L Stainless Steel |
| Bonnet | Nickel Plated Brass Barstock |
| Diaphragm | 316L Stainless Steel |
| Seal | PTFE |
| Seat | PCTFE |
| Filter | 10 Micron 316L Stainless Steel |

👍 SPECIFICATION

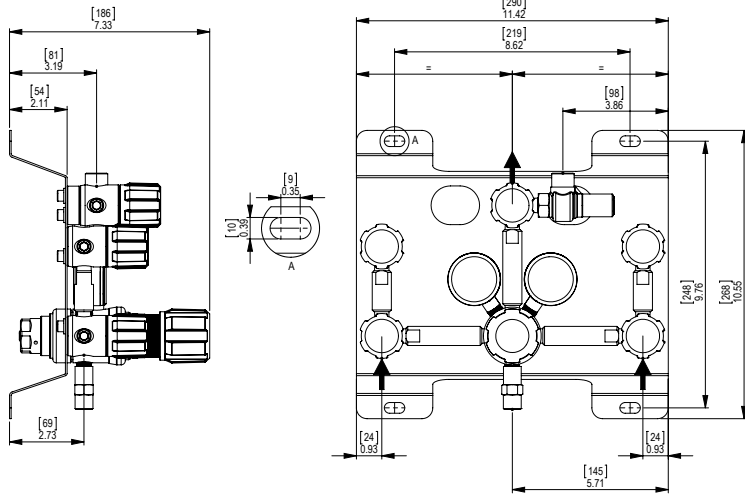
| | |
|-------------------------|--|
| Maximum Inlet Pressure | 60 bar (870 PSI) / 300 bar (4350 PSI)* |
| Delivery Pressure Range | 3.5 bar (50 PSI) / 6 bar (90 PSI) / 10 bar (150 PSI) |
| Gauge | 50mm (2") Diameter |
| Ports | 1/4" NPT Female |
| Temperature Range | -20° C to +60° C (-4° F to +140° F) |
| Flow Coefficient (Cv) | 0.078 |
| Helium Leak Integrity | 1x10 ⁻⁹ mbar l/s |
| Weight | 5.0kg (11.02 lbs)**** |

** Cylinder connection not included *** 3.1 material certificates available on extended lead times, contact the sales office for further information. **** Subject to final configuration.

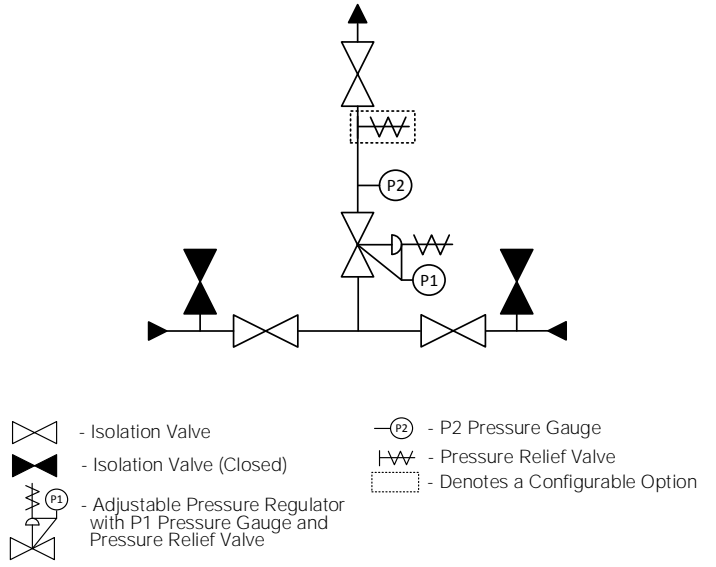
✓ FLOW PERFORMANCE



DIMENSIONS



PROCESS & INSTRUMENTATION



Model No. Selector Guide

| Product Type | Inlet Pressure | Outlet Pressure | Inlet Pressure Gauge | Outlet Pressure Gauge | Inlet/Cylinder Connection | Outlet Connection | Options |
|--------------|-----------------------|---------------------------|---|---|-------------------------------------|------------------------------------|--|
| SGM6021 | 02 60 bar / 870 PSI | 03 -1 - 3.5 bar / 50 PSIG | 00 No Gauge Fitted | 00 No Gauge Fitted | 000 No Inlet Fitted | 00 No Outlet Fitted | A No Options Selected |
| SGM6022 | 04 300 bar / 4350 PSI | 04 -1 - 6 bar / 90 PSIG | 01 bar/PSI | 01 bar/PSI | 001 1/8 Stainless Steel Compression | 01 1/8 Stainless Steel Compression | F Bonnet Vent Capture Kit |
| SGM6041 | | 05 -1 - 10 bar / 150 PSIG | 02 bar/PSI Contact Gauge | 02 bar/PSI 3.1 Cert (stainless steel only)*** | 002 1/4 Stainless Steel Compression | 02 1/4 Stainless Steel Compression | G Helium Test Certificate |
| SGM6042 | | | 03 bar/PSI 3.1 Cert (stainless steel only)*** | | 003 6mm Stainless Steel Compression | 03 6mm Stainless Steel Compression | H 3.1 Material Certificate |
| | | | 04 bar/PSI Contact Gauge 3.1 Cert (stainless steel only)*** | | 004 1/4 NPT Male | 04 1/4 NPT Male | J NACE Certificate |
| | | | | | | | K Certificate of Conformity |
| | | | | | | | M CO2 Burst Disc |
| | | | | | | | P Calibration / Pressure Test Certificate |
| | | | | | | | R Fitted Pipeline Pressure Relief Valve, FKM Seal |
| | | | | | | | S Fitted Pipeline Pressure Relief Valve, EPDM Seal |
| | | | | | | | X Special Instruction |