



# Chem Master SGD6040 Series

6.0 Purity Two Stage Stainless Steel Diaphragm Autochange Change Gas Control Panel



The Chem Master SGD6040 Series two stage differential autochange control panels are designed for primary pressure gas control of corrosive, toxic or high purity gases up to grade 6.0 purity (99.9999%), on gas distribution systems where constant delivery pressure is required.

- **SGD6041 Series** | Two Stage Twin Cylinder Diaphragm Differential Autochange Gas Control Panel, FKM Seal, FFKM Pressure Relief Valve
- **SGD6042 Series** | Two Stage Twin Cylinder Diaphragm Differential Autochange Gas Control Panel, EPDM Seal, FFKM Pressure Relief Valve

## ★ FEATURES

- High pressure isolation valves
- High pressure purge facility
- Two stage pressure regulation
- Process line isolation valve
- Encapsulated valve design
- Twin cylinder configuration

## 📄 MATERIAL

|               |                                |
|---------------|--------------------------------|
| ■ Body        | 316L Stainless Steel           |
| ■ Bonnet      | Nickel Plated Brass Barstock   |
| ■ Diaphragm   | 316L Stainless Steel           |
| ■ Bonnet Seal | PTFE                           |
| ■ Valve Seat  | PCTFE                          |
| ■ Seal Option | FKM / EPDM                     |
| ■ Filter      | 10 Micron 316L Stainless Steel |

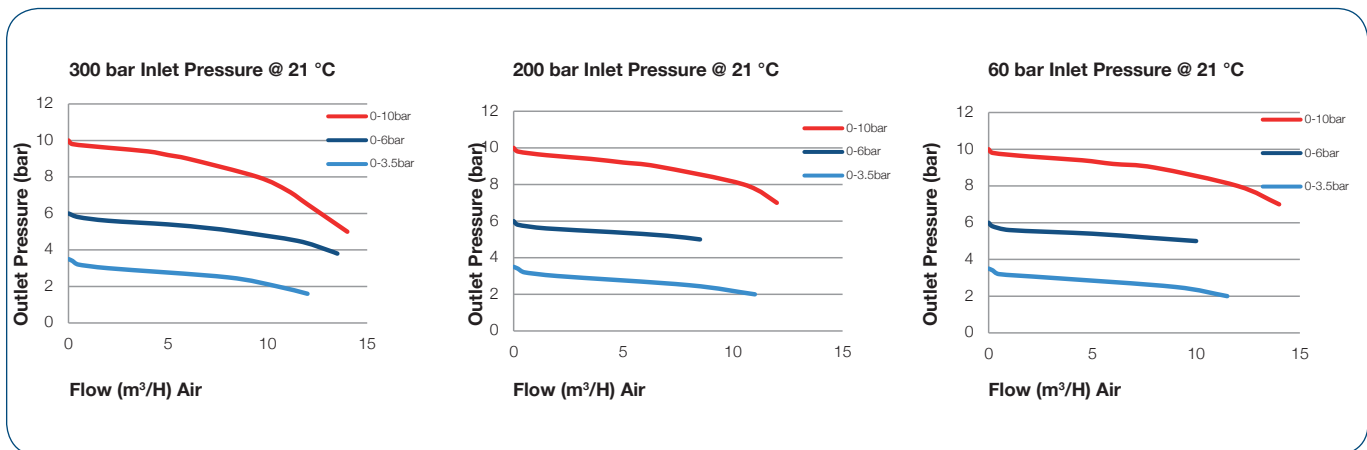
## 👍 SPECIFICATION

|                           |  |
|---------------------------|--|
| ■ Maximum Inlet Pressure  | 15 bar (220 PSI)<br>60 bar (870 PSI)<br>300 bar (4350 PSI) |
| ■ Delivery Pressure Range | 3.5 bar (50 PSI)<br>6 bar (90 PSI)<br>10 bar (150 PSI)     |
| ■ Gauges                  | 50mm (2") Diameter   |
| ■ Ports                   | 1/4" NPT Female  |
| ■ Temperature Range       | -20° C to +60° C (-4° F to +140° F)                        |
| ■ Helium Leak Integrity   | 1x10 <sup>-9</sup> mbar l/s                                |
| ■ Weight                  | 8.0 kg (17.64 lbs) ****                                    |

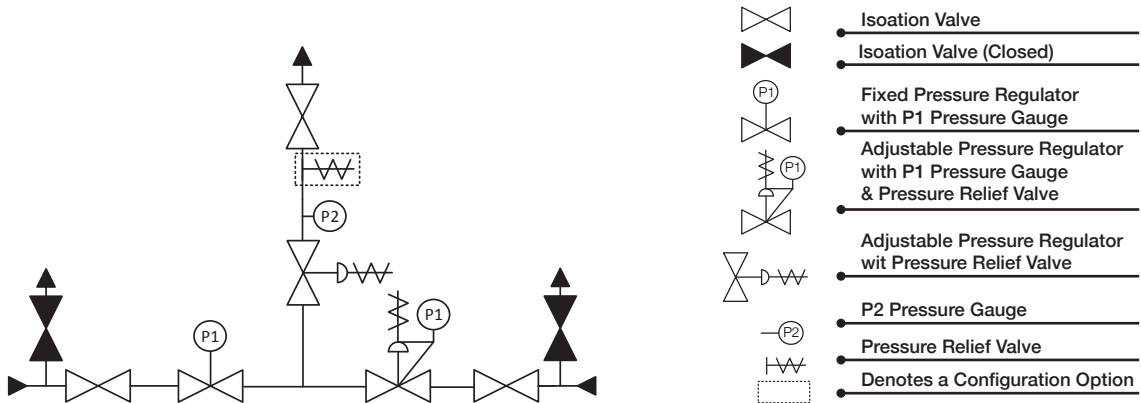
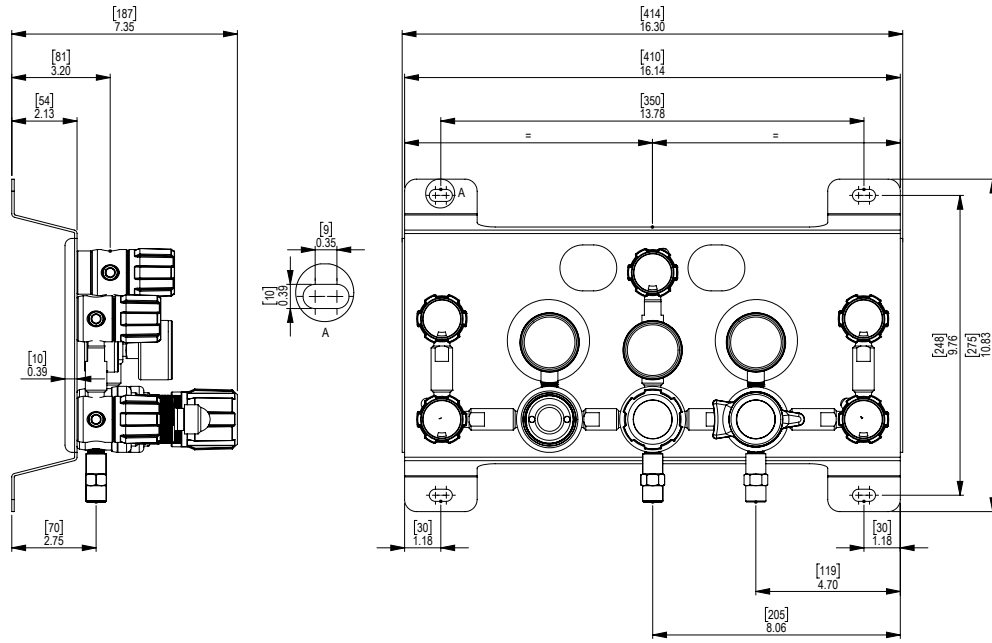
\*\*\* Nace and 3.1 material certificates available on request.  
Please contact the sales office for further information.

\*\*\*\* Subject to final configuration.

## ✓ FLOW PERFORMANCE



# DRAWINGS



## 1 2 3 MODEL NO. SELECTOR GUIDE

Example for a Model No. for SGD6040 Series

| Product Type | Inlet Pressure Bar [PSI] | Outlet Pressure Bar [PSI] | Inlet Pressure Gauge     | Outlet Pressure Gauge | Inlet/Cylinder Connection           | Outlet Connection                  | Options                                  |
|--------------|--------------------------|---------------------------|--------------------------|-----------------------|-------------------------------------|------------------------------------|--|
| SGD6041      | 02 60 [870]              | 03 0 to 3.5 [50]          | 00 No Gauge fitted       | 00 No Gauge Fitted    | 000 1/4 NPT Female                  | 00 1/4 NPT Female                  | A No Options Selected                    |
| SGD6042      | 04 300 [4350]            | 04 0 to 6 [90]            | 01 bar/PSI               | 01 bar/PSI            | 001 1/8 Stainless Steel Compression | 01 1/8 Stainless Steel Compression | F Bonnet Vent Capture Kit                |
|              | 06 15 [220]              | 05 0 to 10 [150]          | 02 bar/PSI Contact Gauge |                       | 002 1/4 Stainless Steel Compression | 02 1/4 Stainless Steel Compression | G Helium Test Certificate                |
|              |                          |                           |                          |                       | 003 6mm Stainless Steel Compression | 03 6mm Stainless Steel Compression | H 3.1 Material Certificate ***           |
|              |                          |                           |                          |                       | 004 1/4 NPT Male                    | 04 1/4 NPT Male                    | J NACE Certificate ***                   |
|              |                          |                           |                          |                       |                                     |                                    | K Certificate of Conformity              |
|              |                          |                           |                          |                       |                                     |                                    | M CO2 Burst Disc                         |
|              |                          |                           |                          |                       |                                     |                                    | P Calibration/ Pressure Test Certificate |
|              |                          |                           |                          |                       |                                     |                                    | R Fitted Pipeline Pressure Relief Valve  |
|              |                          |                           |                          |                       |                                     |                                    | X Special Instruction                    |